

# Post-Arrival Registration

Return of Ethiopian Migrants from the Kingdom of Saudi Arabia

From 5, May 2017 to 31, October 2018



International Organization for Migration (IOM)  
The UN Migration Agency

Regional Data Hub | RDH

IOM Mission in Ethiopia

## Background

An estimated 500,000 Ethiopians were present in the Kingdom of Saudi Arabia (KSA) once the amnesty period for the irregular migrants expired in March, 2017. The Government of the Kingdom of Saudi Arabia (GoKSA) had previously extended the deadline several times.

The migrants arrive at the Bole International Airport in Addis Ababa, where they are registered by IOM staff before continuing on to their destination. IOM also provides support to the most vulnerable migrants in the form of basic assistance.

The following analysis tackled data collected from 5, May 2017 to 31, October 2018.

## Highlights

IOM estimates that above 220,000 individuals were returned to Ethiopia during the reporting period, out of which **176,426\*** were registered since April, 2017. Since May, 2017, it is estimated that **170,602 (16% voluntary returnees and 84% forced returnees)** were registered and profiled upon arrival;

67% of reported migrants were adult and male, returning to Ethiopia involuntarily;

61% of migrants (above 6 years old) had primary level education, and approximately 26% had less than the primary level;

Most migrants were performing jobs involving more physical labor in KSA. 50% of male migrants were performing unskilled manual labor, and other 31% reported being unemployed. 83% of the female migrants were working as housemaids;

61% of the migrants lived in the most populated regions of KSA, and the remaining of the migrants lived in the nearby regions;

The highest flow of people happened from Ar Riyad (26%), Jizan (29%), and Makkah (33%) in KSA, to Tigray (27%), Oromia (31%), and Amhara (32%), in Ethiopia.

\*Total number of registered arrivals from April 2017 to October 31st, 2018.

### Education level by age range and gender

Females (6+ years): 37,174

Less than primary	Primary	Secondary	Some University
35 < 0.1%	6 < 0.1%	1 < 0.1%	
8,211 5%	20,049 12.3%	7,226 4.4%	272 0.2%
465 0.3%	798 0.5%	108 0.1%	

no response : 3 female migrants

Male (6+ years): 126,227

Less than primary	Primary	Secondary	Some University
83 < 0.1%	63 < 0.1%	5 < 0.1%	
32,033 19.6%	76,230 45.7%	12,654 7.7%	373 0.2%
1,304 0.8%	3,245 2%	206 0.1%	

no response : 31 male migrants

### Age range and gender

Female: 40,669 migrants

60+ years	42 (<1%)
18-59 Years	35,760 (21%)
6-17 Years	1,372 (1%)
0-5 Years	3,489 (2%)

no response :  
6 female migrants <0%

Male: 129,933 migrants

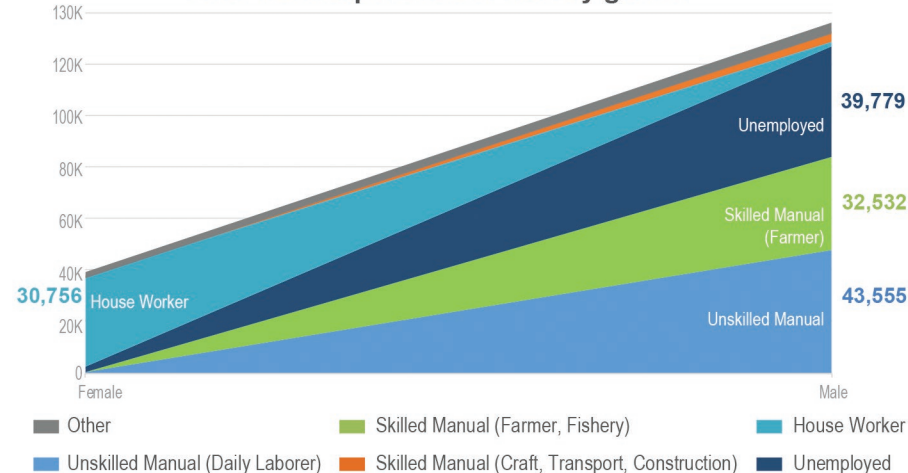
60+ years	151 (<1%)
18-59 Years	121,320 (71%)
6-17 Years	4,756 (3%)
0-5 Years	3,694 (2%)

no response :  
12 male migrants <0%

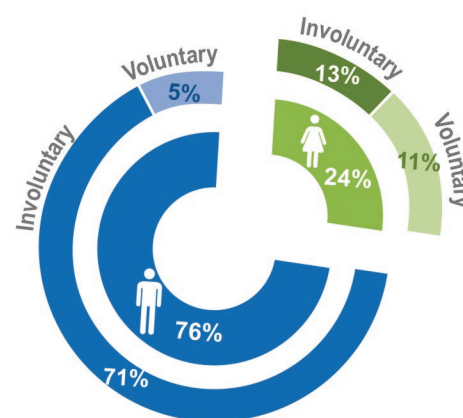
### Most significant reported vulnerability

- 194 migrant women in this age range reported being **pregnant/lactating**
- 12 migrant children were **unaccompanied**
- 55 children presented vulnerabilities
- 107 migrants reported **physical injuries/disabilities**
- 35 children were **unaccompanied**
- 61 children presented vulnerabilities

### Prior work experience in KSA by gender



### Gender profile and type of return





# Post-Arrival Registration

Return of Ethiopian Migrants from the Kingdom of Saudi Arabia

From 5, May 2017 to 31, October 2018



International Organization for Migration (IOM)  
The UN Migration Agency

## Geographic distribution of migrants according to their previous region of residency in the Kingdom of Saudi Arabia (KSA), and the return destination in Ethiopia (by region)

### Number of migrants by region of residence in KSA

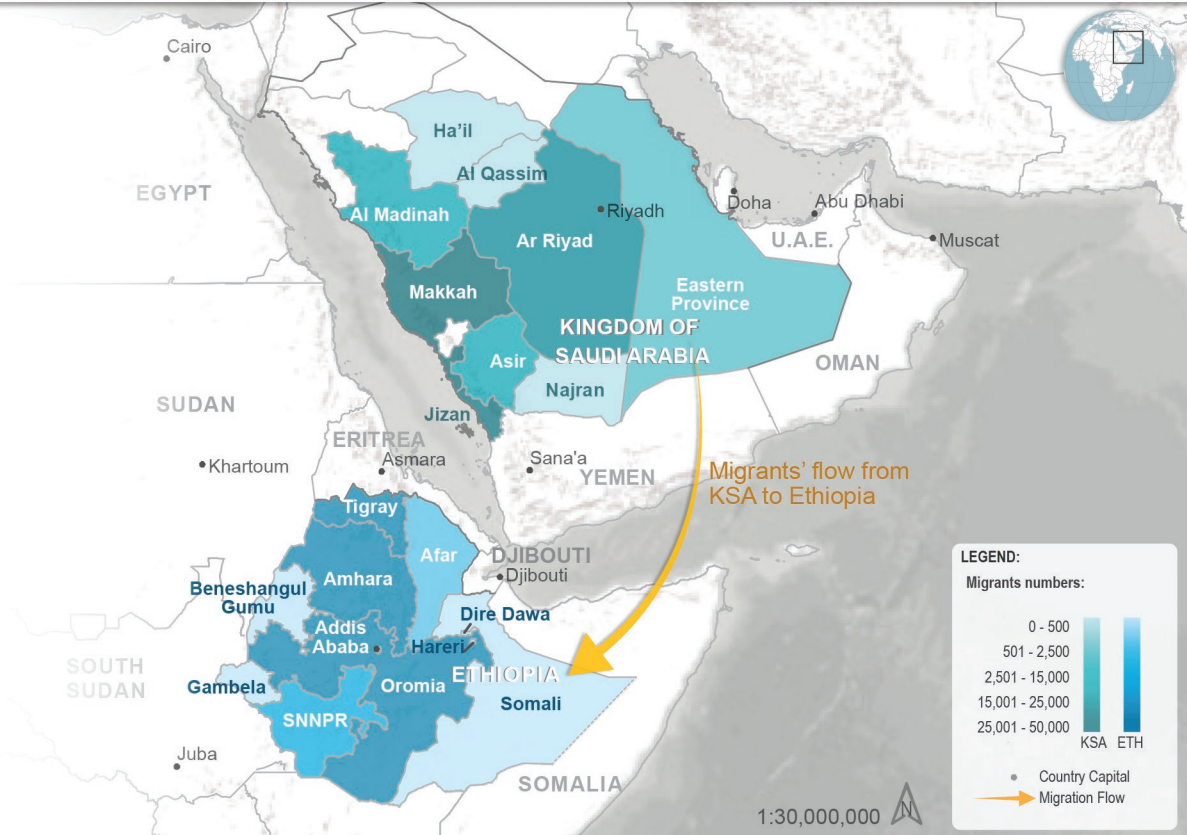
Region	Migrant no.
Makkah	55,820
Jizan	49,046
Ar Riyad	45,186
Al Madinah	5,374
Asir	4,464
Eastern Province	2,676
Najran	641
Ha'il	251
Al Qassim	12

7,132 Migrants did not respond

### Number of migrants by region of destination in Ethiopia

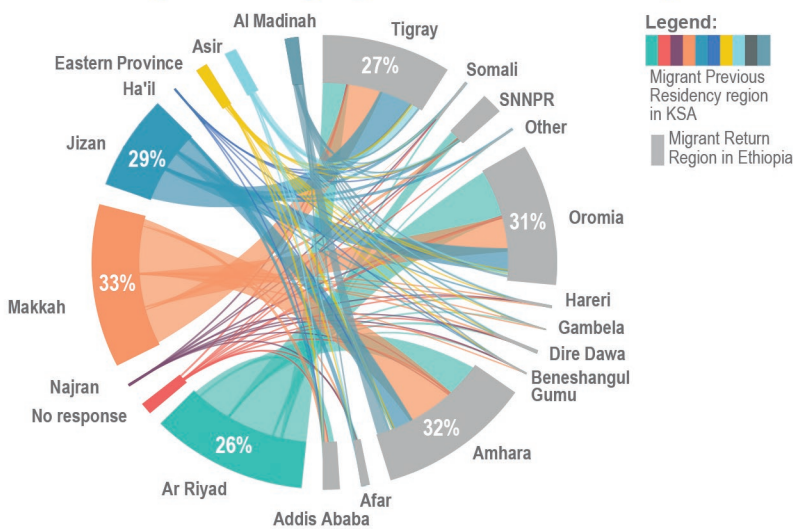
Region	Migrant no.
Amhara	55,372
Oromia	53,561
Tigray	46,076
SNNPR	6,369
Addis Ababa	4,014
Afar	2,921
Dire Dawa	803
Somali	446
Hareri	426
Beneshangul Gumu	289
Gambela	42

59 Migrants did not respond

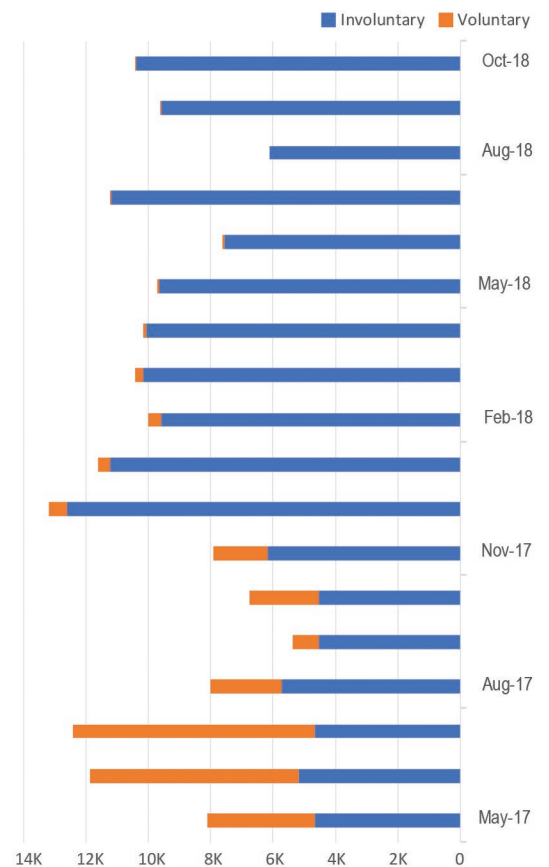


Disclaimer: This map is for illustration purposes only. Names and boundaries on this map do not imply official endorsement or acceptance by IOM.  
Source: Basemap (Esri, USGS, NOAA); Data (IOM and OSM)

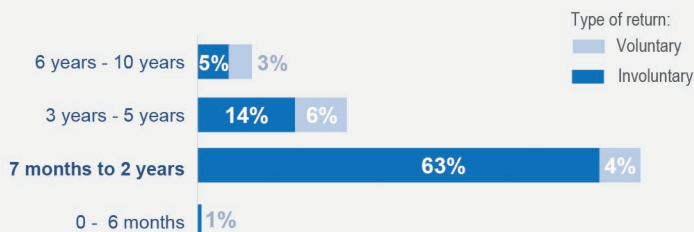
### Migrant flow by region - from KSA to Ethiopia



### Number of migrants by month: voluntary and involuntary returns



### How long have migrants lived in KSA categorized by type of return



Approximately 4% of migrants did not respond